



2014 Sector Driving & Access Maps Colorado River Ranch

Controllers/Spectators/Press

Take I-70 to Exit 133, Dotsero. Take US 6 to Colorado River Road, continue for 12.6 miles to CRR event entrance – look for THE CUP signs at entrance. Watch for active trains at track crossing, continue to red cabin. Signs are posted for parking.

Access Is Open – Park in area by red cabin. The venue is open to walk in on and watch the action. Enjoy the ranch. *The ranch is a working cattle ranch, give way to cowboys.*

Always close any gates you go through.

Competitor Bus/Van Competitors will be dropped off in 4 locations.

1st Drop Off – cross bridge and left down road (bridge road closed to all traffic) **16-11**

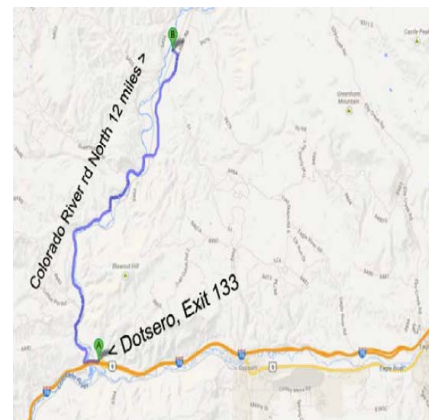
2nd Drop off – at bridge by water **10-9**

3rd Drop off – turn back down away from train track and drop off near river **8-5**

4th Drop off – road next to manager's house **4-1**

Ranch manager is Scott Jones.

The Sector Judges are Adam Papuga and Michael Pukas.



The Colorado River – The Colorado River Ranch



2014 Sector Driving & Access Maps The Blue River – Blue Valley Ranch

Controllers/Spectators/Press.

From I-70, Wolcott exit 157, then CO 131 N for 13.5 miles to State Bridge turn right then N on County road 1/Trough Rd 13 miles to Hwy 9 S and turn right, go 8 miles to right turn onto Spring Creek Road.

From Denver, I-70 to Silverthorne exit 205, then N on Hwy 9 for 24 miles, to Spring Creek Road.

Take road down to river and cross bridge, parking lot immediately to your left.

Controllers will meet at parking area and get brought in by carpooling.

Access Is Limited – All controllers, spectators, press must take shuttles into ranch and be dropped off for session and ride back to parking at end of session. You may walk from beat to beat during the session. **No public vehicles allowed.**

Competitor Bus/Van

Shuttle Van and Suburban go down road together for proper drop off timing. ***This is important!***

Shuttles will be met by sector judge and they will direct you thru the ranch access fence and ranch road.

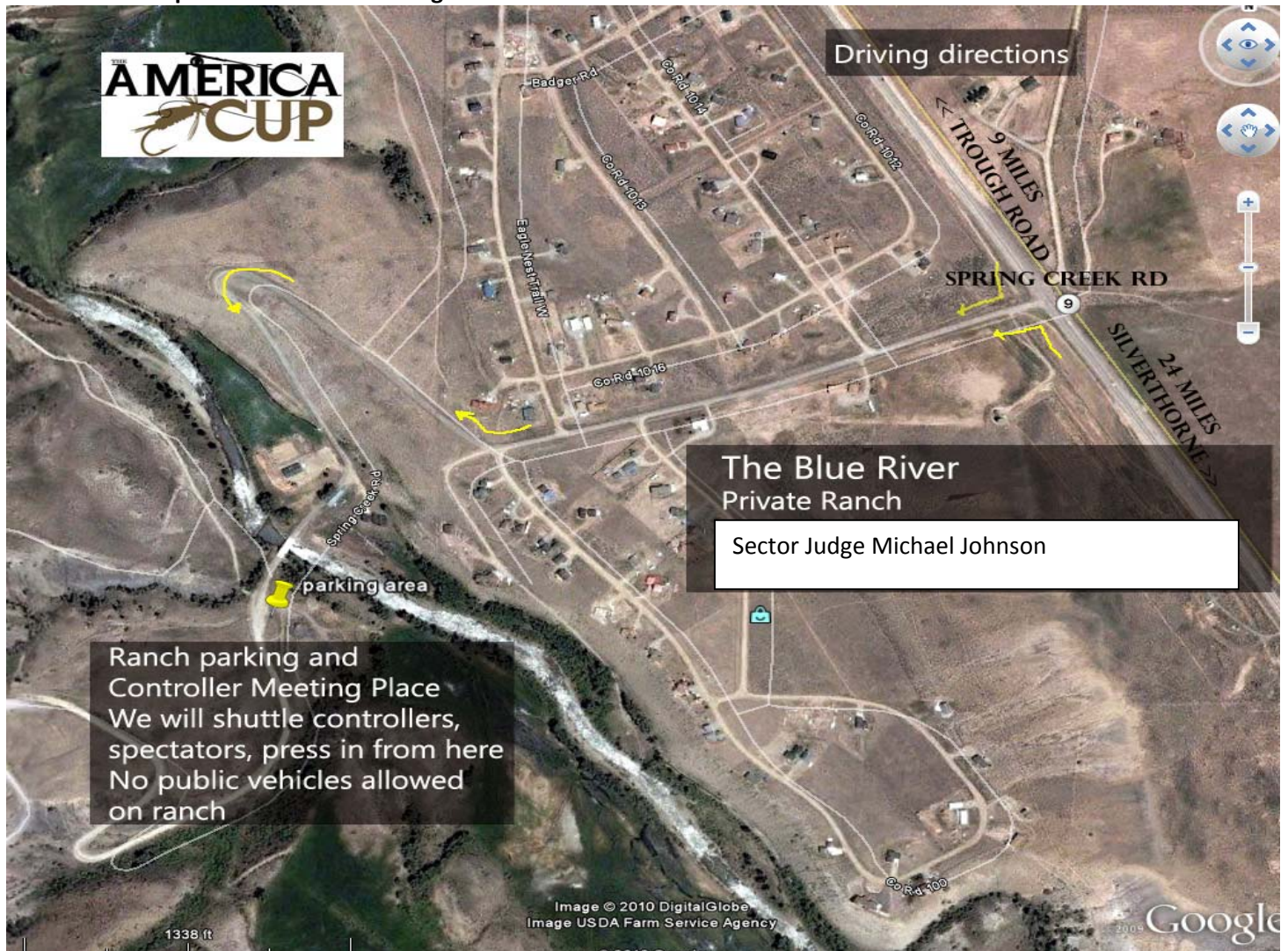
Driver will drop off anglers as you travel down ranch dirt road at road markers. Turn around area at Out Cabin.

Drivers will both stay at Out Cabin until it is time to pick up anglers, if drivers are assigned as controllers, control 16/15.

No passing on ranch road (one lane), drive slowly on ranch property.

Do NOT drive off dirt road as drainage ditch runs parallel with road and your tires/bus will get stuck.

Ranch owner is private. The Sector Judge is Michael Johnson.



The Blue River – Private Ranch

The America Cup International Fly Fishing Tournament

www.theamericacup.com



2014 Sector Driving & Access Maps Dillon Reservoir

Controllers/Spectators/Press

Take I-70 to Silverthorne, exit 205, Go north on HWY 6 to stop light at Lake Dillon Drive, go right to road end, go left to parking lot overlooking water. Parking is free. Boats will stage on dock, to right of marina, before and between sessions.

Access Is Open - The venue is open to all. Enjoy the marina and Tiki Bar.

Competitor Bus/Van

Go to parking lot at end of Lake Dillon Drive, go left, to parking lot overlooking the water. Drop off all and park in lot.

Lake owner is Town of Dillon, dock is Dillon Marina. The Sector Judges are Mike Bahr and Jacob Knight



Dillon Reservoir – Town of Dillon and Dillon Marina



2014 Sector Driving & Access Maps Sylvan Lake

Controllers/Spectators/Press

Take I-70 to Eagle, CO. Off exit go left to roundabout and then go right (look for signs directing you to Sylvan Lake State Park), take next left on Capital Ave, which turns into Brush Creek Road, bear left at stop sign (follow park signs) to old Brush Creek Road and go 14 miles to State Park, past the park visitor center, bear right to short drive to lake.

Controllers - The Sector Judge has a daily parking pass (pre-purchased) for all controller vehicles. Sector Judge will show you where to store trailers. We have rented a cabin for the controllers.

Access Is Open - The venue is open to all. The park vehicle access fee is \$7 per day. Sector Judge has passes for shuttles.

Competitor Bus/Van

The Sector Judge has the bus/van parking passes (pre-purchased). Drive down and to left, turn right at restrooms and drop anglers off near boat put in. Drive back to parking area above put in next to restrooms.

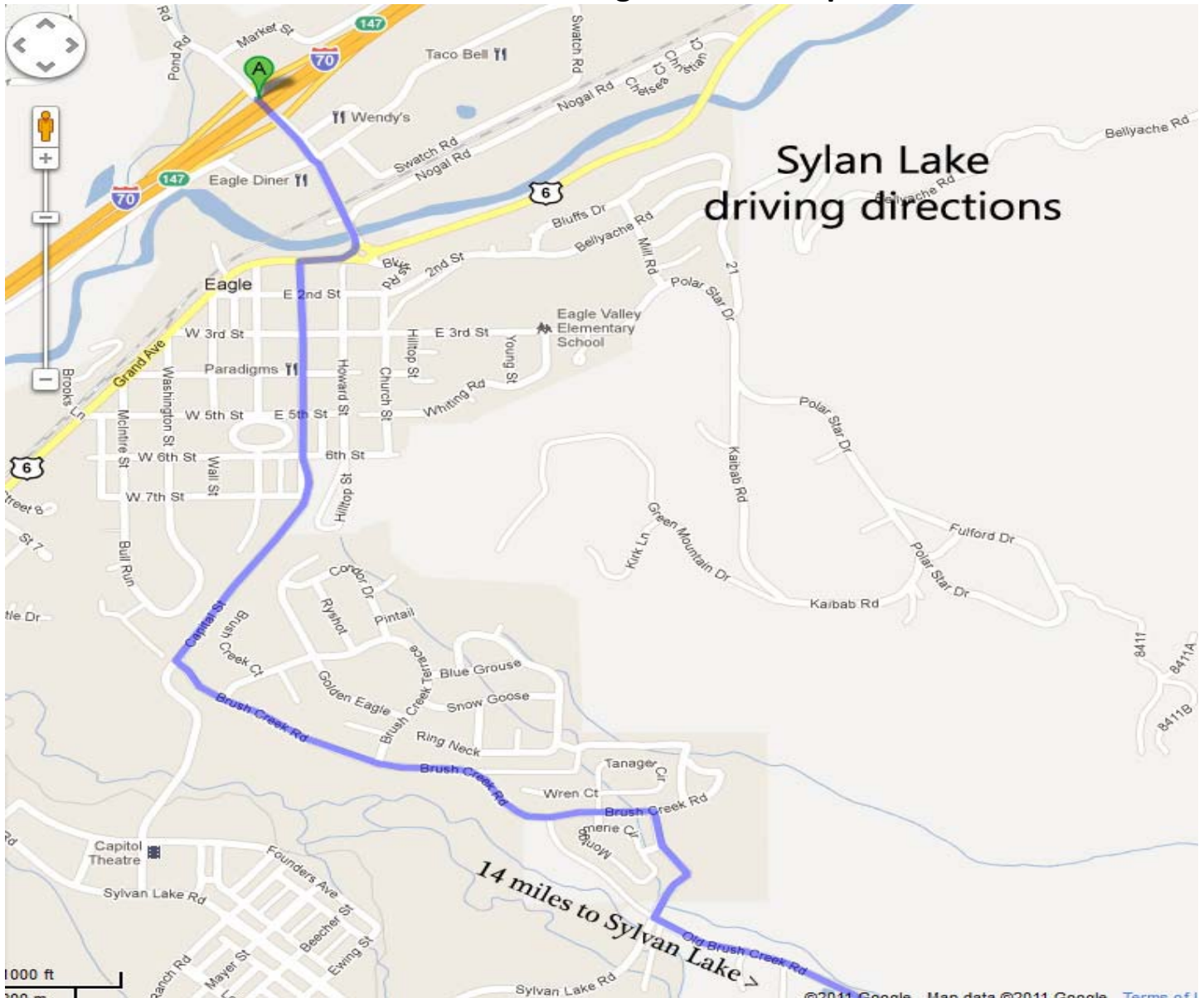
Lake Owner is Colorado State Parks. The Sector Judge is Bob Streb.



Sylvan Lake venue – Sylvan Lake State Park / CDOW



2014 Sector Driving & Access Maps



Sylvan Lake venue – Zoom view of path through the Town of Eagle



2014 Sector Driving & Access Maps The Eagle River

Controllers/Spectators/Press

The Eagle River may be accessed via I-70 at Wolcott exit 157. This puts you at bottom of beats and you may drop off backwards from beat 16 to beat 1. Use caution along road and be sure to signal when pulling in and off Highway 6.

1st Drop Off – boat house beats **16-15**

2nd Drop off – pump house **14-12**

3rd Drop off – meadows, through the gate CLOSE GATE, down dirt road to river staging beat **11-8**

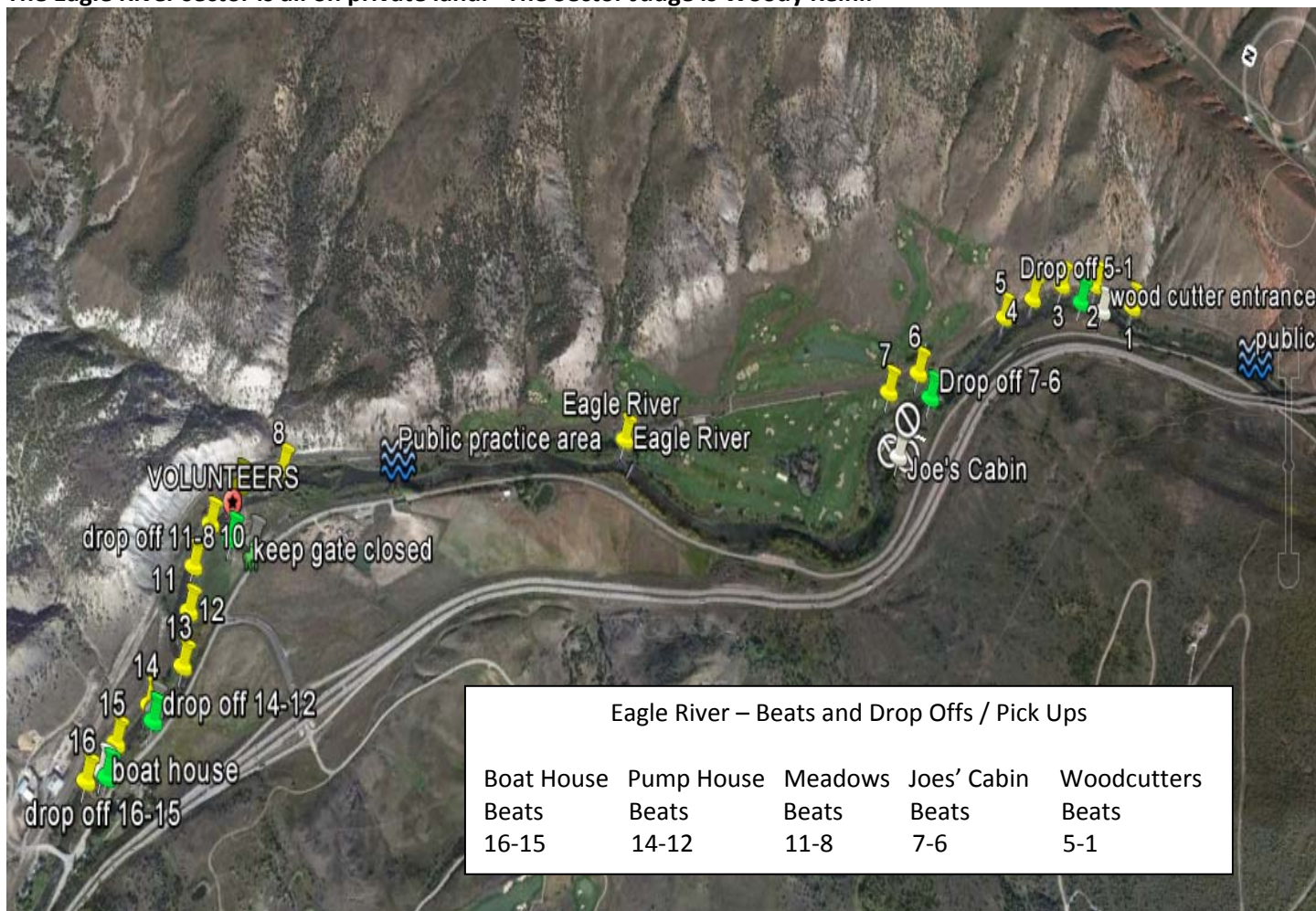
4th Drop off – wood cutters gated entrance, path to left of gate, pull off road and WATCH TRAFFIC beats **5-1**

Access Is Limited - The venue private property and viewing and access is available by way of walking in around closed gates. The meadows area offers the best viewing. Parking alongside road is dangerous and caution must be used.

Competitor Bus/Van

Drop off along the road to the alongside road and caution must be used.

The Eagle River sector is all on private land. The Sector Judge is Woody Keihl.



The Eagle River

Thank you and contact Jodi with any questions 970-390-7425.